




CONSISTENT
ENGINEERING CONSULTANTS



www.consistentconsultants.com

INDEX

- About Us
 - Brand Promise
 - Managing Director
 - Our Solutions
 - Sectors
 - Our Clients
 - Connect with Us
- 

ABOUT US

Consistent Engineering Consultants is a **premier MEP consulting firm** based in Dubai, specializing in integrated building services design.

Our expertise in **Mechanical, Electrical, and Plumbing systems** allows us to collaborate closely with clients, architects, contractors, and stakeholders, ensuring seamless integration of building services.



25+
Sustainable Projects



10+
Countries



18+
Years



120+
Professionals



950+
Projects

BRAND PROMISE

QUALITY

COMMITMENT

As engineering professionals, we believe..

Our goal is to deliver **cutting-edge MEP solutions** to our clients, ensuring projects are completed on **time**, within **budget**, and to maintain **high-quality standards**.

Driving excellence through **advanced technical skills** and **innovative methods**, is our objective.

We focus on providing **reliable** and **efficient** MEP systems, committing to superior project outcomes through our **unwavering dedication** to engineering excellence.

SAGAR KULKARNI

Managing Director

We believe the difference between ordinary and extraordinary is little extra. I am thankful and grateful to the entire team of Consistent who impart that little extra effort to make an **extraordinary team**.

For Any Building, Services is a Life!

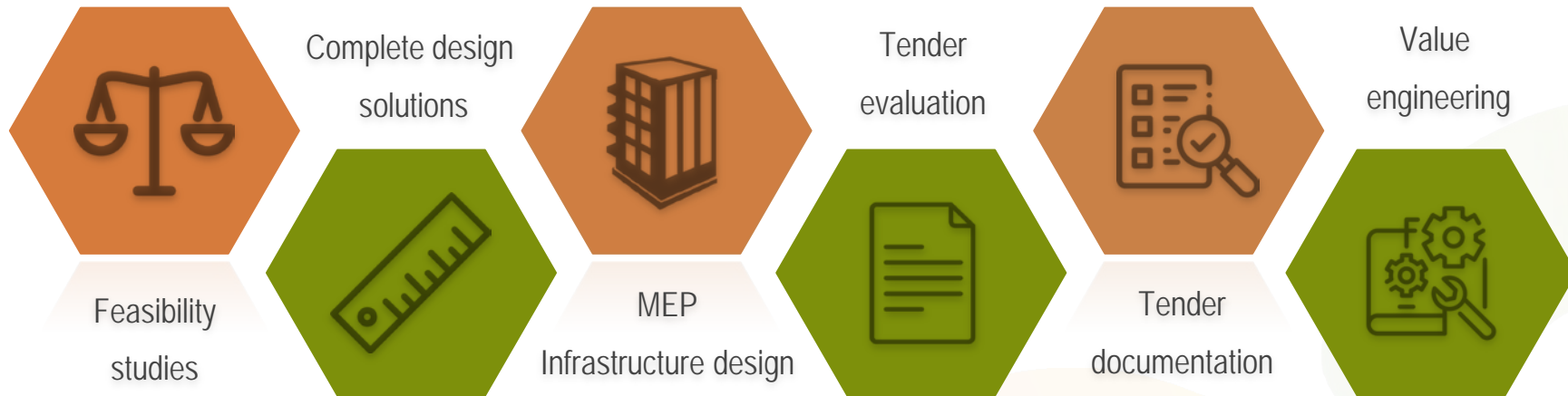
The services are perceived and felt at every moment by occupant. Though the requirements keep on varying based on the nature of the building. All sensory organs keep on reacting with the fundamental parameters of air, light, odour and noise. Which are predominantly handled by building services engineers.

The engineering team at Consistent is exposed to handle **diversified** and **challenging projects**. Ranging from hospitals to malls, industrial to high-rise buildings and luxury villas to major townships.

Continual updation of knowledge base through various certifications, keeping eye on market trends and technologies and precise application in the field has established strong footprints of Consistent in the market.



OUR SOLUTIONS



OUR SOLUTIONS

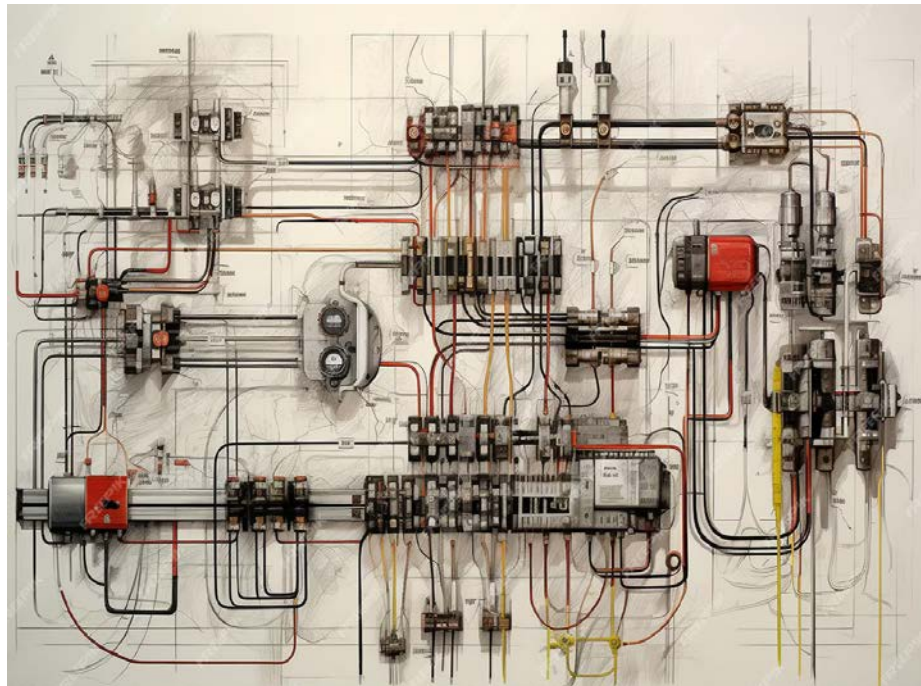
All systems are designed in compliance with the latest international regulations. The design capability of Consistent includes the following building services:

- Heating, Ventilation and Air-Conditioning (HVAC).
- Plumbing and Public Health.
- Fire Protection Systems.
- LPG Distribution.
- Fire Detection, Voice Evacuation Systems.
- Electrical Distribution and Special Power Systems.
- Back-Up Power Generation and UPS Power Systems.
- Lighting, Specialist lighting, Façade Lighting.
- Integrated Building Management Systems and IP Based Converged Solutions.
- Security Systems, i.e., CCTV, SACS, Door Monitoring, Alarm Notification.
- AV/ELV Systems for Digital Signage, PA/BGM, IPTV, AV for Meeting Rooms and Ballrooms, Paging, Intercom Systems etc.
- HITV and Room Management Systems for Hotels.
- Information and Communications Technology (ICT) Including Active and Passive Systems, Infrastructure (Structured Cabling/ FO Cabling).
- Solar PV Grid Connected Systems Design.
- Medical Gas Networks for Hospitals
- Nurse Calls System.

HVAC

Designed and meticulously crafted to maximize energy efficiency and environmental sustainability without compromising comfort.

- Tailored to meet the functional requirements of the building
- Human and product comfort are core deliverables
- Optimized energy consumption solutions
- Sustainable HVAC design



Electrical Engineering

Powering innovation with our expert electrical engineering services, to deliver solutions that optimize performance and sustainability.

- Energy saving is the prime directive
- Rigorous application of ASHRAE and Green Building standards
- Sector specific engineering design
- Reduction of operational costs

Water Supply & Public Health

Expertise meets innovation to deliver solutions that safeguard communities, ensuring access to clean water and promoting public health and well-being.

- Creating, efficient and sustainable systems
- Proficient in global design
- Helping with well-planned water management systems
- Provision of Solar Water Heater/Tankless Water Heater



Fire Safety Engineering

Meticulously designed to mitigate risks and protect lives and property, ensuring unparalleled safety standards for every environment.

- In-house specialists overseeing our fire safety designs
- Analysis of the class of fire, heat generated, and smoke patterns
- Robust and customized designs
- Both internal and external Hydrant Systems

Gas Distribution

Most fundamental services facilitated by MEP engineering.

- Rigorous application of fire safety codes in design
- Components of the design are fire rated as well as explosion-proof.
- Designed, keeping safety and ease of usage as top priority
- Ensuring compliance to FLS standards



Building Management Systems (BMS & IOT)

A building management system (BMS) can be called the brain controlling all the building systems, whether electrical, HVAC, plumbing, or others.

- Tailor-made BMS design for each project
- Conserving energy and reducing the building's carbon footprint
- Providing greater control and convenience
- Promoting energy-efficiency in design.

Building Information Modeling (BIM)

In the age of the Fourth Industrial Revolution, building design has also evolved into new dimensions.

- Highly integrated design processes with 3D modeling and simulation software
- Develop an efficient and effective BIM execution plan.



Third Party Reviews

Team Consistent provides third party reviews of the design and inspections for proposed, ongoing and completed building construction projects.

- Focus on meeting end user requirements as the prime objective.
- Provide detailed reviews at both the Design and Implementation stages.
- Prioritize quality as a non-negotiable aspect of building design.
- Promote efficient and sustainable building practices

SECTORS

Whether it is a luxurious hotel, or an industrial facility, our expertise ensures that the function of the built environment is **facilitated** and **heightened** by our designs.

What is the goal of a healthcare facility? To provide a positive patient experience to facilitate healing and good health!

Every built environment, every design has a **specific functionality, a purpose**. Our sector-specific approach takes that functionality into account, making sure that our designs not only facilitate that purpose, but orient and enhance the environment towards it.

Residential townships, industrial factories, hospitals, 5-star hotels, schools, or offices- we tailor every design to suit the needs of the sector, lending your project maximum effectiveness in fulfilling your design intent.



RESIDENTIAL AND TOWNSHIP

ENGINEERING CONSULTANTS



Project name: Ras Al Khor development
(30 buildings) for **WASL Properties**



Project name: Opalz' Twin
Towers for **DANUBE
Properties**



Project name: Lakeside Towers for
DAMAC Properties



Project name: G+6P+40F Beachfront
Residential Development for **EMAAR**



Project name: Retail Hub Phase
for **Majid Al Futtaim**

COMMERCIAL

ENGINEERING CONSULTANTS



Project name: Redevelopment of Village 4
Deira Night Market for Nakheel Malls



Project name: Renovation of Oasis Mall
for Landmark Group



Project name: ENOC House III Office
Building



Project name: Oasis Mall for Landmark
Group



Project name: Shopping Arcade for
Madina Hypermarket



Project name: Lulu Mall at Sharjah

HOSPITALITY

ENGINEERING CONSULTANTS



Project name: Le Meridien 5 Star Hotel at Marjan Island



Project name: Dorchester Hotel for Omniyat



Project name: 4-star Revier Hotel



Project name: 5-star Kempinski Hotel



Project name: 4-star Radisson Hotel

HEALTHCARE

ENGINEERING CONSULTANTS



Project name: Medcare G+2 facility
Palace Hospital



Project name: Cosmetic Surgery Centre, Doha



Project name: i-Care Clinic

EDUCATIONAL

ENGINEERING CONSULTANTS



Project name: Amity University



Project name: Kings' Dubai School



Project name: Arab Unity School



Project name: JSS International School



Project name: Diyafah School

INDUSTRIAL

ENGINEERING CONSULTANTS



Project name: E-fulfillment centre for Dubai South



Project name: ISUZU Office, training centre and warehouse



Project name: Plasma Screen plant for JBF Group



Project name: Warehouse for Petrochem

INFRASTRUCTURE

ENGINEERING CONSULTANTS



**Project name: Samara Community for
EMAAR Properties**



**Project name: Azalea community for EMAAR
Properties**



**Project name: Townhouses and Retail
Blocks for Nakheel Properties**



**Project name: Neighbourhood 2 (NH2) in
Valley Community for EMAAR**

RETAIL

ENGINEERING CONSULTANTS



Project name: Homecentre for Landmark Group



Project name: Magic Planet for Majid Al Futtaim



Project name: Shake Shack



Project name: Debenhams



Project name: NIKE store in Dubai Mall

SUSTAINABILITY

ENGINEERING CONSULTANTS



Project name: 3.5 MW Solar Rooftop for Trilogi Logistics



Project name: New Indian Model School (NIMS)

AWARDS

ENGINEERING CONSULTANTS



GOLD Award at HVAC Design Award 2024



MEP Project of the Year in MEERA Awards by ISHRAE 2025.



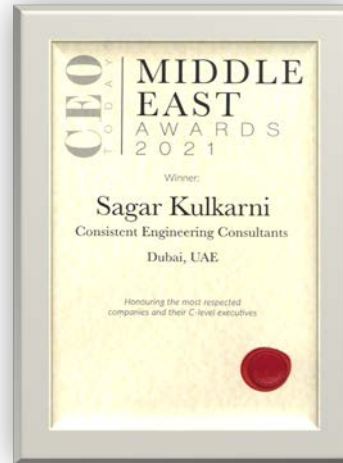
Sustainable Project of the Year in CBNME Awards 2025

AWARDS

ENGINEERING CONSULTANTS



CEO Middle East Awards



CEO Middle East Awards



BUILD Construction & Engineering Awards



YUVACON Award for best performance



ICCL Award



Women's Excellence Award



URJAVARAN 2023-2024

TOP 20 MEP CONSULTANT (2021 TO 2024)

ENGINEERING CONSULTANTS

TOP MEP CONSULTANTS

CONSISTENT ENGINEERING CONSULTANTS
SAGAR KULKARNI
FOUNDER AND MANAGING DIRECTOR

Sagar Kulkarni, with over a decade of engineering experience in India and the UAE, founded Consistent Engineering Consultants in Dubai in 2017. Currently operating through its offices in Dubai, Mumbai, and Dammam, Consistent has a team of over 100 professionals working on a diverse portfolio of projects that include hotels, hospitals, residential developments, townships, villa clusters, hospitals, educational institutions, warehouses, commercial establishments, data centers, and retail chain outlets.

Consistent's operational base is still expanding, and it has successfully delivered various projects in GCC countries, India, Korea, Nigeria, Ethiopia, Doha, Azerbaijan, Mexico, and South Korea. The company has implemented ISO 9001, ISO 14001:2015, ISO 45001:2018, and ISO 50001:2018 to focus on systems and improved overall performance. Consistent has also registered itself as an EPCO with all major super ESCOs and subcontractors in the UAE.

In addition to MEP designs, Consistent is also implementing sustainable practices and working with clients to conduct energy audits and conduct Energy Conservation Measures (ECM) and Energy Efficiency Measures (EEM) for facility owners. The firm has adapted the Sustainable Development Goals (SDGs) and has obtained LEED certifications for its clients. Consistent intends to focus on and assist in improving the performance of existing buildings and restoring greenhouses and conservatories.

Consistent firmly believes in the training of its team members and has been actively spending its time and efforts to adopt new technologies over the years. By facilitating sponsored training to its team members, the firm has acquired various accreditations i.e. LEED AP, WELL AP, Foundation PMP, CIMA, CIA, BEAM, BICAF, CMV, MS, Energy, Solar PV specialist which provides in-depth analysis on the projects.

The company has integrated Building Information Modeling into their project processes to enhance the quality of their deliverables. In addition to utilizing BIM modeling, the firm is also leveraging



various software tools to reduce their engineering inputs. Consistent is supporting their clients by creating facilities and proposed models aligned with ASHRAE 90.1 standards using IES software. The firm is adopting renewable energy generation via PV solar panels with PVnet and optimizing electrical power distribution through ABBnet.

Kulkarni says, "With changing trends in the construction industry and the introduction of BIM, the adoption of new technology and digitalization in mandatory. Stakeholders should be open and vigilant for evaluation of performance with benchmarking metrics for both new and existing assets and implement corrective actions at early stages. In addition, awareness about sustainability needs to be enhanced as people associated with energy efficiency and costs are impacting stakeholders from taking proper decisions."

The consultancy is committed to delivering a strong value proposition to the clients and continuously improving the quality of its deliverables. In order to provide exceptional value to its clients,

ISS: MEP March 2021

TOP MEP CONSULTANTS 2022

CONSISTENT ENGINEERING CONSULTANTS
SAGAR KULKARNI
FOUNDER AND MANAGING DIRECTOR



Over more than a decade of engineering experience in India as well as for the UAE, Sagar Kulkarni founded Consistent Engineering Consultants in Dubai in 2017 and has led the company to success and over established a top-notch firm in the region. Over the last 12 months, the firm notes that they focused on system and improved overall performance by implementing ISO 9001:2015, Quality Management, ISO 14001:2015, Environmental Management System, ISO 45001:2018, Occupational Health and Safety & ISO 50001:2018, Energy Management System.

Consistent has also registered itself as an EPCO with all major super ESCOs and subcontractors in the UAE.

Looking ahead, Kulkarni says that Consistent aligns its vision and mission with Sustainable Development Goals (SDGs). He explains, "We specialise in providing solutions that can reduce the carbon impact on climate. Therefore, Consistent is open to exploring new concepts and technologies which can be

implemented in the ongoing and forthcoming projects which will reduce greenhouse gas (GHG) emissions. Consistent is expanding its operations in India as well as in Saudi Arabia by MEP and sustainability systems. There is a need to invest in and leverage with consistent capital investments. Additionally, Consistent is exploring multiple options, which will assist property owners to enhance the performance and life of the buildings."

The firm has recently adopted its other key focus areas such as smart environmental quality, inclusion of digital, circular, green, and regenerative solutions, have been implemented according to WELL building standards.

The new projects also assist a reduction in consumption of resources i.e. water, power and fuel, with emerging creative meeting the requirement of LEED v4.1 Neighborhood Development, says Kulkarni, adding that Consistent's other key focus areas are in the well LEED v4.1.

Regarding its future objectives, Kulkarni notes that apart from MEP design, Consistent is seeking the clients to obtain LEED Certification and promoting environmentally friendly methods, and is registered with ENVIROTECH to implement solar PV systems.

"Consistent is probably the only consultancy firm registered as an EPCO. Apart from new projects, Consistent intends to focus on and assist in improving existing buildings' performance and reducing GHG emissions," he adds.

The firm notes that it has successfully handled over the BICAF relationships for Anantara Hotels - Bangor Island, F&C Developers and the new 1000sqm F&C. It is leveraging performance and energy conservation. Consistent aims to reduce the power and water consumption by 10 and 20 per cent, respectively.

ISS: MEP March 2022

TOP MEP CONSULTANTS 2023
CONSISTENT ENGINEERING CONSULTANTS
SAGAR KULKARNI
MANAGING DIRECTOR

The firm has provided comprehensive engineering services (design and supervision) in multiple projects for M/s. Lulu International Group and recently handed over hypermarket and departmental stores at Dubai's Souk Wazwan, Mallah. Consistent is also designing energy-efficient systems for Abu Dhabi's Anantara Hotel Annex at the Reef Yas Island. The Consultant team is working with the hotel owner to improve the energy efficiency on the island. The project will include carrying out a carbon appraisal, a TRV replacement to energy analysis. Furthermore, the firm also worked out an HVAC retrofit project for Dubai's Queen Elizabeth 2 tower and F&C Headquarters, which included energy performance review and implementation. In addition, Consistent has also provided its design services at AD Durrat, KIZAD Logistics Park, as well as Mallah's Souk Al Markh (Duba Night Market). Consistent has been awarded with ISO 9001:2015 - Quality Management System, ISO 14001:2015 - Environmental Management, ISO 45001:2018 - Occupational Health & Safety Management, ISO 50001:2018 - Energy Management. Consistent has also implemented health and safety measures on a number of key projects, including the HITEC Residential Development at JVC, Dubai for HINE Group and at the Lulu Hypermarket & Shops at Souk Wazwan for Lulu Group International. Consistent is the firm's focus for P&L. Consistent's ongoing projects, Sagar Kulkarni, will also support the implementation of SDG 7, 9, 11 & 12 in existing and upcoming buildings. We will also contribute to Dubai's vision to reduce energy consumption by 30% by 2030, and will work towards equipping the design of renewable energy - including solar - in the market."

Sagar Kulkarni added, "The market is dynamic, and the adoption of new concepts and solutions is the key for survival. There is a need to invest in adopting new solutions. With Big Data coming to the fore, the improvement of the 'green factor' among stakeholders will be key for future success and growth."

ISS: MEP March 2023

Publication of 2023

CONSISTENT ENGINEERING CONSULTANTS



Sagar Kulkarni, Founder & CEO

Consistent Engineering Consultants (CEC) specialises in providing MEP design solutions and consultation for using renewable energy to enhance built environments.

CEC has implemented the ISO 50001 Energy Management and ISO 14001 Environmental Management standards, and the company intends to reduce its consumption of energy and water by 3% and 2% year-on-year, respectively. In addition, the company adopts new technologies and concepts for implementing sustainable technologies in construction.

Sagar Kulkarni, founder and managing director of Consistent Engineering Consultants, says: "With changing trends in the construction industry, adoption of new technologies and digitalisation is mandatory. Stakeholders should be open and vigilant for evaluation of performance with benchmarking systems for both new as well as existing assets and implement corrective actions at early stages."

"Furthermore, awareness about sustainability needs to be enhanced as myths associated with energy efficiency and costs are hampering stakeholders to take proper decisions. With challenging trends, developers tend to focus only on the initial cost and feasibility of the project, which can compromise the operational and environmental aspects of the project. Prudent owners and authorities should ask for energy modeling of the assets before tendering."

BACK TO TOP

Publication of 2021

Publication of 2022

Publication of 2024

CONFERENCES AND SUMMITS

ENGINEERING CONSULTANTS



KSA Business Summit 2023



Retrofit Tech Summit - 2021



KSA Business Summit with Delegates



Climate Control 2022 – Lecture on MEP

OUR CLIENTS



CONNECT WITH US

www.consistentconsultants.com

UAE - Dubai

P.O. Box 125786, Office 2001 & 2002, API World Tower,
Sheikh Zayed Road, Opp. of World Trade Centre, Dubai, U.A.E.

Tel: +971-4-3860601

Email: info@consistentconsultants.com

Saudi - Dammam

P.O. Box 8469, Dammam 31482, Kingdom of Saudi Arabia.

Tel: +966-13-8279733

Email: saudi@consistentconsultants.com

India - Mumbai

Office 108 & 109, Opal Square, Wagle Estate,
Thane (W) 400604, Maharashtra, India.

Tel: +91-22-46014242

Email: mumbai@consistentconsultants.com